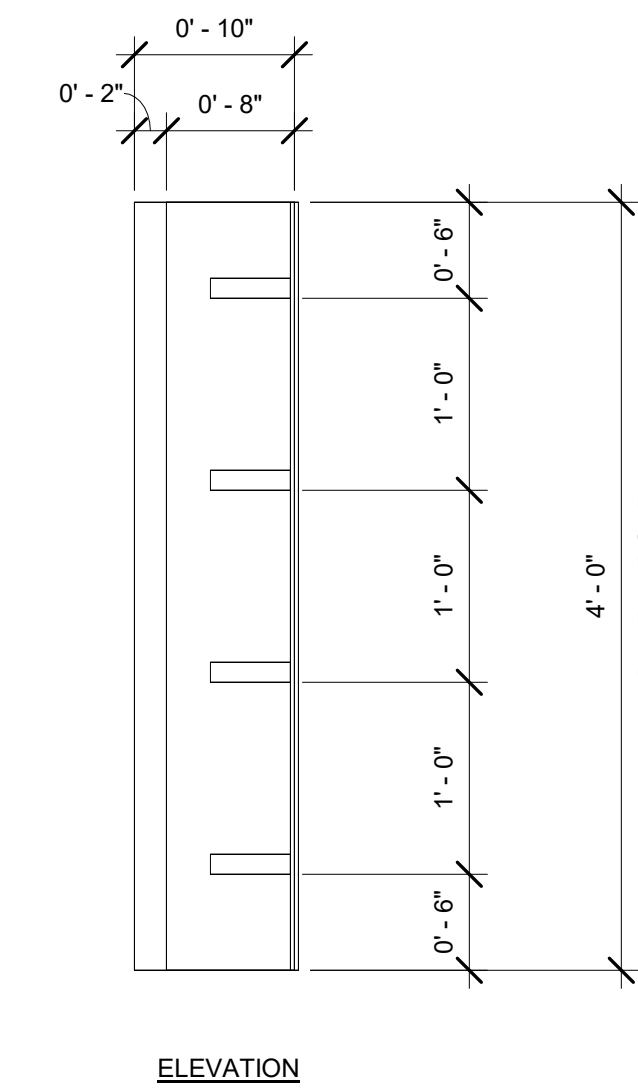
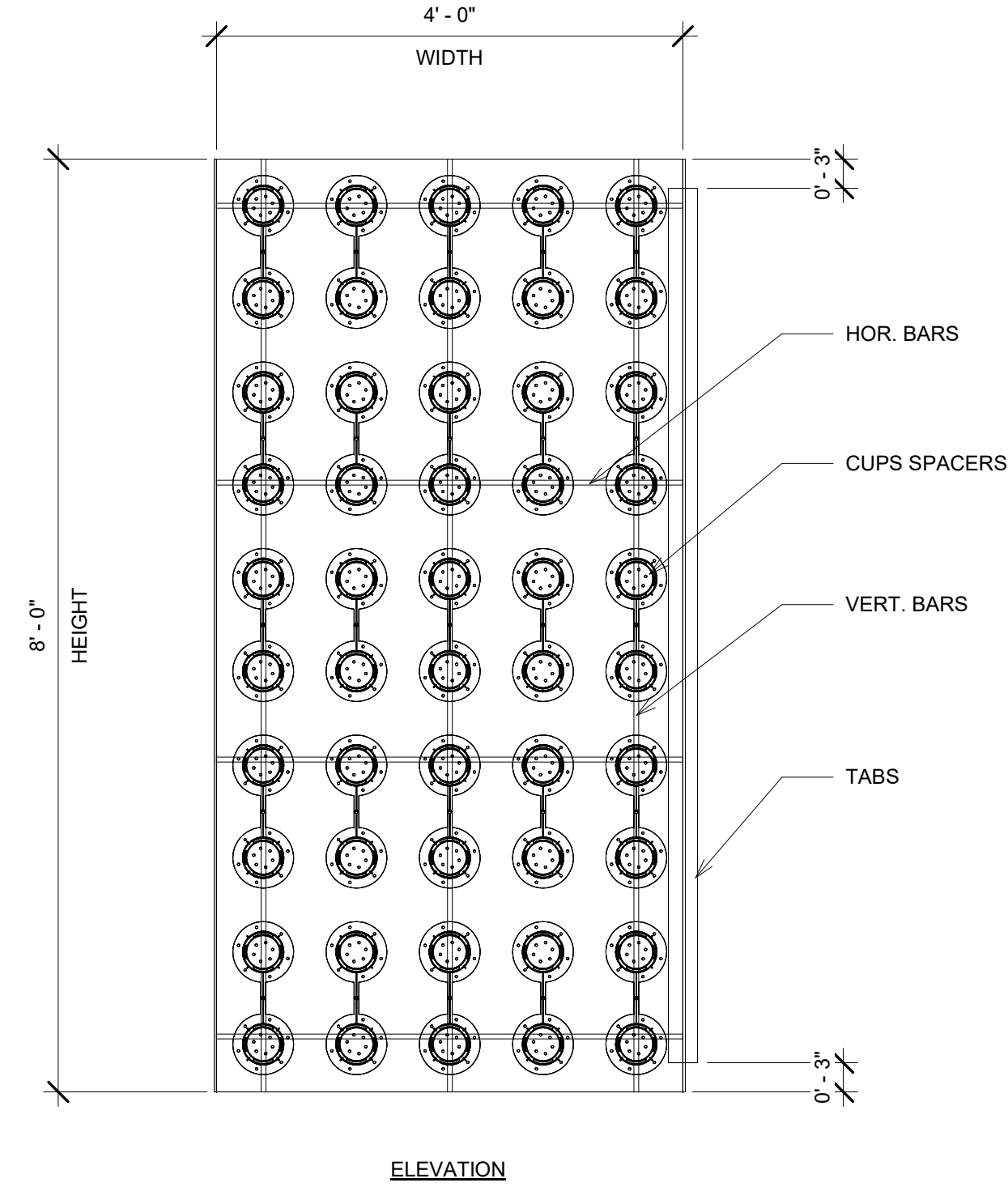
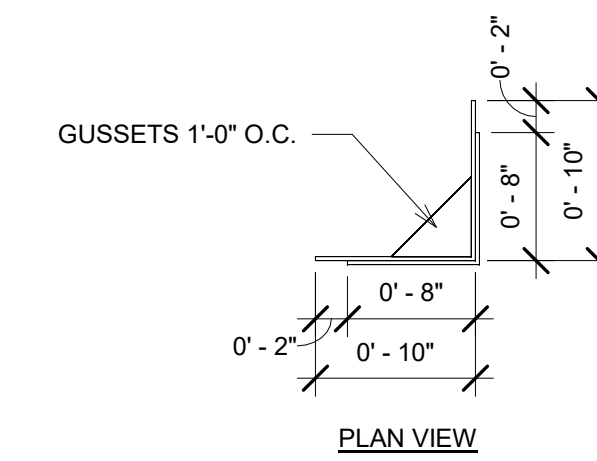
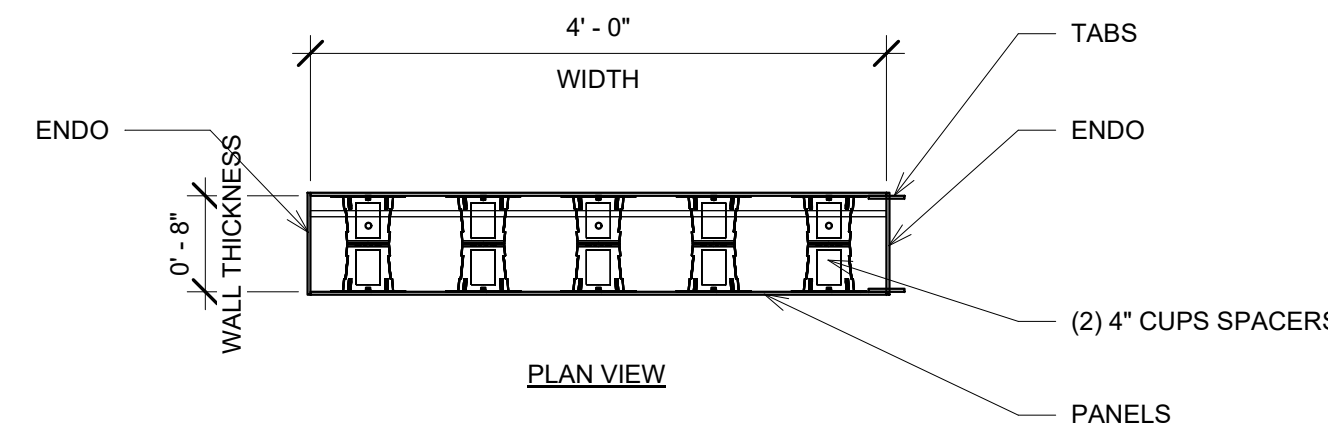


CEMWALL PANELS SCHEDULE										
Mark	Quantity	Wall Thickness	Panel Height	Panel Width	Panel Thickness	Hor Bar Diameter	Vert Bar Diameter	Number of Hor Bars	Number of Vert Bars	Tabs
CW1	38	0'-8"	8'-0"	4'-0"	0'-0 1/4"	0'-0 1/2"	0'-0 1/2"	4	3	
CW2	37	0'-8"	7'-5 1/2"	4'-0"	0'-0 1/4"	0'-0 1/2"	0'-0 1/2"	3	3	
CW4	1	0'-8"	8'-0"	3'-10 1/2"	0'-0 1/4"	0'-0 1/2"	0'-0 1/2"	4	3	Yes
CW5	2	0'-8"	8'-0"	3'-9"	0'-0 1/4"	0'-0 1/2"	0'-0 1/2"		2	
CW6	1	0'-8"	7'-5 1/2"	3'-9 1/2"	0'-0 1/4"	0'-0 1/2"	0'-0 1/2"	3	3	Yes
CW7	2	0'-8"	7'-5 1/2"	3'-9"	0'-0 1/4"	0'-0 1/2"	0'-0 1/2"	3	3	Yes
CW8	1	0'-8"	7'-5 1/2"	3'-7"	0'-0 1/4"	0'-0 1/2"	0'-0 1/2"	3	2	Yes
CW9	2	0'-8"	8'-0"	3'-0 1/4"	0'-0 1/4"	0'-0 1/2"	0'-0 1/2"	4	2	
CW10	2	0'-8"	7'-5 1/2"	3'-0 1/4"	0'-0 1/4"	0'-0 1/2"	0'-0 1/2"	3	2	
CW11	1	0'-8"	7'-5 1/2"	3'-1"	0'-0 1/4"	0'-0 1/2"	0'-0 1/2"	3	3	Yes
CW12	2	0'-8"	8'-0"	2'-4"	0'-0 1/4"	0'-0 1/2"	0'-0 1/2"	4	2	Yes
CW13	2	0'-8"	7'-5 1/2"	2'-4"	0'-0 1/4"	0'-0 1/2"	0'-0 1/2"	3	2	Yes
CW14	2	0'-8"	8'-0"	2'-7 1/4"	0'-0 1/4"	0'-0 1/2"	0'-0 1/2"	4	2	Yes
CW15	1	0'-8"	8'-0"	2'-10 1/2"	0'-0 1/4"	0'-0 1/2"	0'-0 1/2"	2	2	Yes
CW16	1	0'-8"	7'-5 1/2"	2'-10 1/2"	0'-0 1/4"	0'-0 1/2"	0'-0 1/2"	3	2	Yes
CW17	2	0'-8"	7'-5 1/2"	2'-9 1/2"	0'-0 1/4"	0'-0 1/2"	0'-0 1/2"	3	2	Yes
CW18	1	0'-8"	7'-5 1/2"	2'-11"	0'-0 1/4"	0'-0 1/2"	0'-0 1/2"	3	2	Yes
CW19	2	0'-8"	7'-5 1/2"	1'-10 1/2"	0'-0 1/4"	0'-0 1/2"	0'-0 1/2"	3	2	Yes
CW20	1	0'-8"	8'-0"	2'-2 1/2"	0'-0 1/4"	0'-0 1/2"	0'-0 1/2"	4	2	No
CW21	1	0'-8"	7'-5 1/2"	2'-2 1/2"	0'-0 1/4"	0'-0 1/2"	0'-0 1/2"	4	2	No
CW22	2	0'-8"	7'-1 1/2"	1'-10 1/2"	0'-0 1/4"	0'-0 1/2"	0'-0 1/2"	2	2	
CW23	33	0'-8"	1'-10 1/2"	4'-0"	0'-0 1/4"	0'-0 1/2"	0'-0 1/2"	2	2	
CW24	14	0'-8"	2'-9"	4'-0"	0'-0 1/4"	0'-0 1/2"	0'-0 1/2"	2	2	Yes
CW25	1	0'-8"	1'-10 1/2"	2'-2 1/2"	0'-0 1/4"	0'-0 1/2"	0'-0 1/2"	2	2	No
CW26	2	0'-8"	1'-10 1/2"	2'-9 1/2"	0'-0 1/4"	0'-0 1/2"	0'-0 1/2"	2	2	Yes
CW27	2	0'-8"	1'-10 1/2"	3'-9"	0'-0 1/4"	0'-0 1/2"	0'-0 1/2"	2	2	Yes
CW28	1	0'-8"	1'-10 1/2"	2'-10 1/2"	0'-0 1/4"	0'-0 1/2"	0'-0 1/2"	2	2	Yes
CW29	1	0'-8"	2'-7"	3'-7"	0'-0 1/4"	0'-0 1/2"	0'-0 1/2"	2	2	Yes
CW30	3	0'-8"	5'-3"	2'-0"	0'-0 1/4"	0'-0 1/2"	0'-0 1/2"	2	2	
CW31	2	0'-8"	5'-3"	2'-6 1/2"	0'-0 1/4"	0'-0 1/2"	0'-0 1/2"	2	2	
CW32	1	0'-8"	5'-3"	3'-9"	0'-0 1/4"	0'-0 1/2"	0'-0 1/2"	2	2	Yes
CW33	1	0'-8"	5'-3"	3'-4"	0'-0 1/4"	0'-0 1/2"	0'-0 1/2"	2	2	Yes
CW34	1	0'-8"	5'-3"	2'-5"	0'-0 1/4"	0'-0 1/2"	0'-0 1/2"	2	2	No
CW35	1	0'-8"	5'-3"	1'-9"	0'-0 1/4"	0'-0 1/2"	0'-0 1/2"	2	2	No
CW36	2	0'-8"	2'-9"	2'-9 1/2"	0'-0 1/4"	0'-0 1/2"	0'-0 1/2"	2	2	Yes
CW37	2	0'-8"	2'-9"	1'-10 1/2"	0'-0 1/4"	0'-0 1/2"	0'-0 1/2"	2	2	
CW38	3	0'-8"	1'-5"	4'-0"	0'-0 1/4"	0'-0 1/2"	0'-0 1/2"	2	2	Yes
CW39	1	0'-8"	1'-5"	2'-11"	0'-0 1/4"	0'-0 1/2"	0'-0 1/2"	2	2	Yes
CW40	3	0'-8"	3'-6"	4'-0"	0'-0 1/4"	0'-0 1/2"	0'-0 1/2"	2	2	Yes
CW41	2	0'-8"	3'-6"	3'-6 1/2"	0'-0 1/4"	0'-0 1/2"	0'-0 1/2"	2	2	
CW42	1	0'-8"	3'-6"	2'-11"	0'-0 1/4"	0'-0 1/2"	0'-0 1/2"	2	2	Yes
CW43	1	0'-8"	2'-4"	3'-9"	0'-0 1/4"	0'-0 1/2"	0'-0 1/2"	2	2	No
CW44	1	0'-8"	2'-4"	3'-7"	0'-0 1/4"	0'-0 1/2"	0'-0 1/2"	2	2	Yes
CW45	1	0'-8"	2'-4"	2'-10 1/2"	0'-0 1/4"	0'-0 1/2"	0'-0 1/2"	2	2	Yes
CW46	2	0'-8"	1'-10 1/2"	2'-4"	0'-0 1/4"	0'-0 1/2"	0'-0 1/2"	2	2	Yes
CW47	2	0'-8"	1'-10 1/2"	3'-0 1/4"	0'-0 1/4"	0'-0 1/2"	0'-0 1/2"	2	2	
CW48	1	0'-8"	3'-2 1/2"	3'-1"	0'-0 1/4"	0'-0 1/2"	0'-0 1/2"	2	2	Yes
CW49	1	0'-8"	2'-9"	3'-1"	0'-0 1/4"	0'-0 1/2"	0'-0 1/2"	2	2	Yes
CW50	1	0'-8"	1'-10 1/2"	3'-9 1/2"	0'-0 1/4"	0'-0 1/2"	0'-0 1/2"	2	3	Yes
CW51	1	0'-8"	5'-3"	1'-6 1/2"	0'-0 1/4"	0'-0 1/2"	0'-0 1/2"	4	3	No
CW52	1	0'-8"	2'-9"	3'-9 1/2"	0'-0 1/4"	0'-0 1/2"	0'-0 1/2"	2	2	Yes
CW53	1	0'-8"	4'-10 1/2"	3'-7"	0'-0 1/4"	0'-0 1/2"	0'-0 1/2"	3	2	Yes
CW54	9	0'-8"	4'-0"	8'-0"	0'-0 1/4"	0'-0 1/2"	0'-0 1/2"	3	4	Yes
CW55	1	0'-8"	4'-0"	7'-10 1/2"	0'-0 1/4"	0'-0 1/2"	0'-0 1/2"	3	4	Yes
CW56	1	0'-8"	4'-0"	5'-2 1/2"	0'-0 1/4"	0'-0 1/2"	0'-0 1/2"	3	2	Yes
CW57	1	0'-8"	2'-4"	4'-0"	0'-0 1/4"	0'-0 1/2"	0'-0 1/2"	2	2	Yes
CW58	1	0'-8"	2'-7"	4'-0"	0'-0 1/4"	0'-0 1/2"	0'-0 1/2"	2	2	Yes
EN1	4		8'-0"							
EN2	4		7'-5 1/2"							
EN3	4		1'-10 1/2"							
EN4	1		2'-4"							

Grand total: 220



1 CEMWALL PANEL
FULL SCALE: 3/4" = 1'-0"

2 CORNER COVER
FULL SCALE: 1" = 1'-0"



CLOVER-CSE LLC
PO BOX 2165
PEACHTREE CITY, GA 30269
COSHEA@CLOVER-CSE.COM
(850) 750-1987

SEAL

INFO

OWNER AND/OR CONTRACTOR IS RESPONSIBLE FOR THE CONSTRUCTION PHASE OF THIS PROJECT AND SHALL FOLLOW ALL LOCAL AND NATIONAL BUILDING CODES AS APPLICABLE.

CONSULTANTS

PROJECT NAME

CULLMAN CSTORE

PROJECT LOCATION

N/A

REVISIONS

MARK	DATE	DESCRIPTION

PROJECT NUMBER: 173-00-000

DESIGNED BY: Designer

DRAWN BY: Author

CHECKED BY: Checker

SHEET TITLE

DETAILS & SCHEDULES

SHEET NUMBER

CW-103